

# Founder DocuDefend

## Version 3.0

# User Guide



April 2013

Beijing Founder Electronics Co., Ltd.



The software described in this guide is furnished under a license agreement and may be used only in accordance with the terms of the agreement.

## Copyright Notice

Copyright © 2000-2013 Beijing Founder Electronics Co., Ltd. All Rights Reserved.

Any technical documentation that is made available by the Beijing Founder Electronics Co., Ltd. is the copyrighted work of the Beijing Founder Electronics Co., Ltd. and is owned by the Beijing Founder Electronics Co., Ltd.

NO WARRANTY. The technical documentation is being delivered to you AS-IS and the Beijing Founder Electronics Co., Ltd. makes no warranty as to its accuracy or use. Any use of the technical documentation or the information contained therein is at the risk of the user. Documentation may include technical or other inaccuracies or typographical errors. Founder reserves the right to make changes without prior notice. No part of this publication may be copied without the express written permission of the Beijing Founder Electronics Co., Ltd.

## Trademarks

Founder and Founder logo are registered trademarks of Founder Group Corporation. DocuDefend is a trademark of the Beijing Founder Electronics Co., Ltd.

Microsoft, Windows, Windows 2003, Windows XP, Windows 7, Windows 8 and Microsoft Word, Excel and PowerPoint are trademarks or registered trademarks of Microsoft Corporation.

Adobe, Adobe Acrobat and Adobe Reader are trademarks or registered trademarks of Adobe Systems Incorporated.

Pentium is a trademark of Intel Corporation in the U.S. and other countries.

OpenOffice.org is a trademark of Sun Microsystems, Inc.

WordPerfect is a trademark of Corel Corporation

Other product, font and company names and logos in this guide are trademarks or registered trademarks of their respective holders and are hereby acknowledged.

Beijing Founder Electronics Co., Ltd.

Address: No.9, Str. 5, Shangdi, Haidian District, Beijing, 100085 P. R. China

Tel: +86 (10) 6298 1440, Fax: +86 (10) 6298 1438

Technical support via email:

E-mail: [gasupport@founder.com](mailto:gasupport@founder.com)

Visit our web site: <http://www.founder.com.cn/en>



# Content

<b>Founder DocuDefend Version 3.0.....</b>	<b>1</b>
<b>User Guide .....</b>	<b>1</b>
<b>Content.....</b>	<b>i</b>
<b>Installation and un-installation .....</b>	<b>1</b>
<i>1.1 Operating environment .....</i>	<i>1</i>
<i>1.2 Install the printer driver .....</i>	<i>1</i>
<i>1.3 Install and uninstall DocuDefend .....</i>	<i>1</i>
1. Install DocuDefend .....	1
2. Uninstall DocuDefend.....	3
<b>How to use Founder DocuDefend.....</b>	<b>7</b>
<i>2.1 Online/Offline activation.....</i>	<i>7</i>
<i>2.2 Online/Offline update.....</i>	<i>13</i>
<i>2.3 Create parameter template.....</i>	<i>14</i>
1. Specify a printer.....	15
2. Select a background pattern .....	15
3. Set security message.....	16
4. Configure contrast setting .....	19
5. Other settings.....	23
6. Save as/save a template .....	25
<i>2.4 Use Founder Security Printer .....</i>	<i>26</i>



# 1

---

---

## Installation and un-installation

### *1.1 Operating environment*

**OS:** Windows 7/Windows 8/Windows XP or Windows 2003

**CPU:** PC Intel Core™ 2.0 GHz or above

**RAM:** 1 GB or above

**Free Disk Space:** 100 MB or above

**Video card:** 24 bit true color, 32 MB graphic memory

**Monitor:** 15 inch or above, 1024\*768 or above resolution

**Printer:** 600 dpi white and black printer

### *1.2 Install the printer driver*

Before you install Founder DocuDefend, install the driver of the printing device in advance. For example, if you are going to use a HP printer, you should first install the HP printer's device driver into your computer.

### *1.3 Install and uninstall DocuDefend*

#### **1. Install DocuDefend**

Follow the steps below to install Founder DocuDefend into your system. Here we take the installation in Windows 7 as example.

1. Double-click Setup.exe under the installation program directory to start the setup wizard, as shown in the following figure.

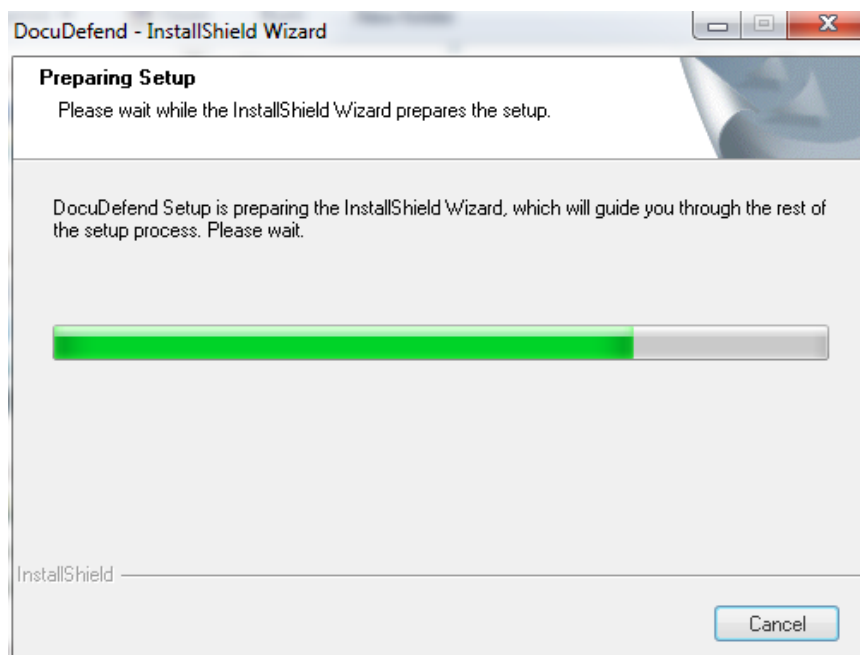


Figure - 1

2. The **Choose Destination Location** dialog box then appears. The setup program provides you with a default destination folder. You can click **Change** to select another location.

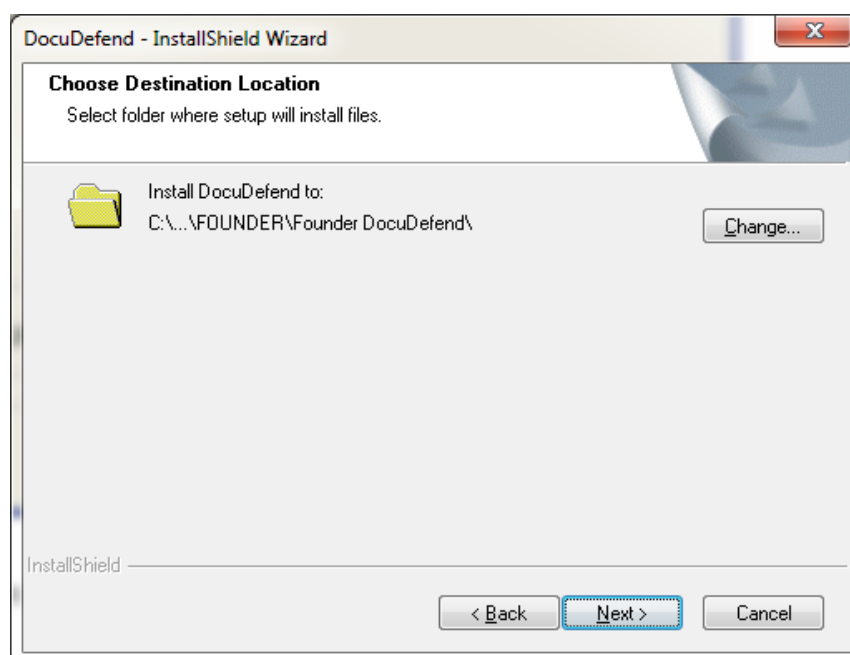


Figure - 2

3. Click **Next** to start copying files. And the **Setup Status** window appears, showing the install progress with a progress bar. You can click **Cancel** to stop the installation.



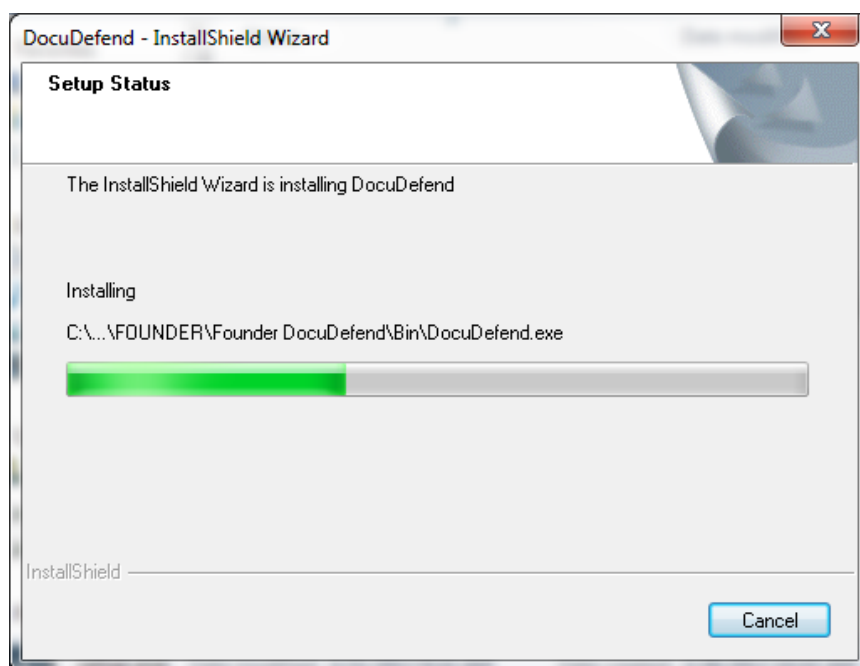


Figure - 3

8. When the bar reaches 100%, the following dialog box will be displayed.

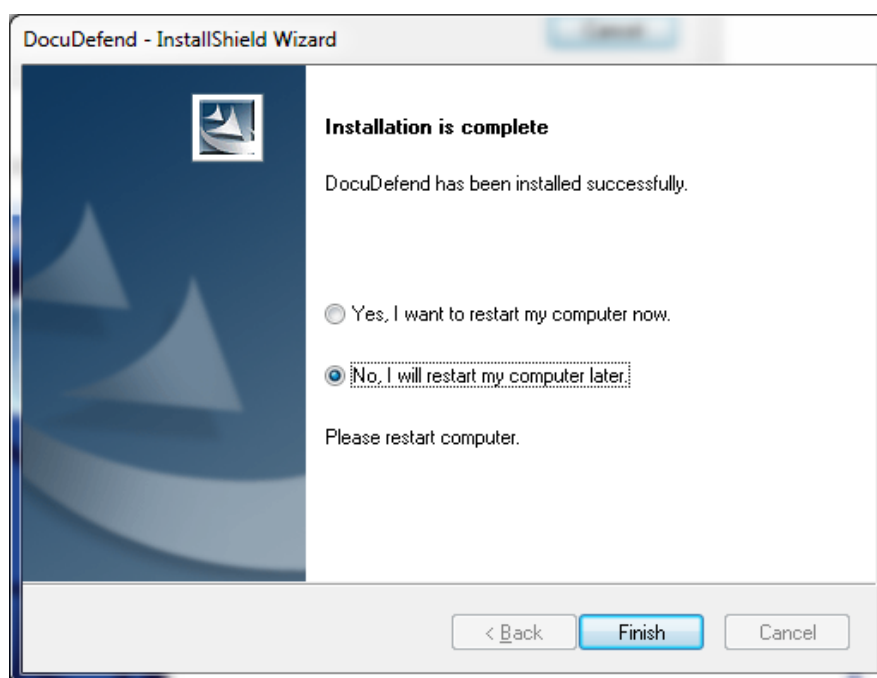


Figure - 4

9. The setup program asks if you want to restart you computer right now or not. Check an option and click **Finish**. Before first run DocuDefend, please restart computer.

## 2. Uninstall DocuDefend

Before you uninstall Founder DocuDefend, close the application if it is running, and cancel all the unprinted or printing files in the buffer. To uninstall the Founder DocuDefend from your computer, perform as follows:

1. Select **Start** → **All Programs** → **Founder DocuDefend** → **Uninstall**, the following dialog box will be opened:

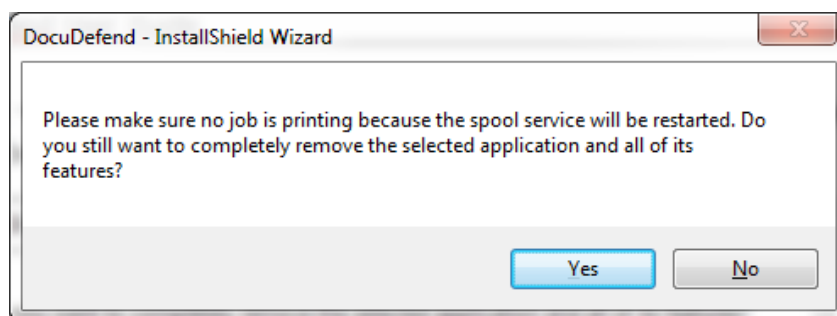


Figure - 5

2. If there is no job is printing, and you want to completely uninstall it, then click **Yes**, the uninstall program begins to remove the Founder DocuDefend. The window as shown in the following figure displays the progress.

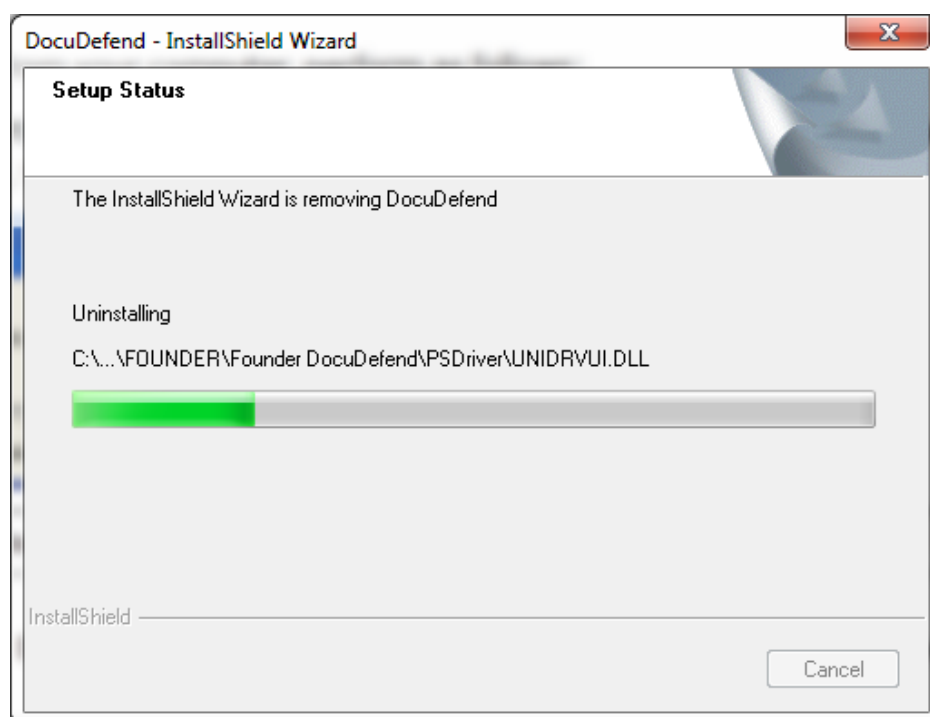
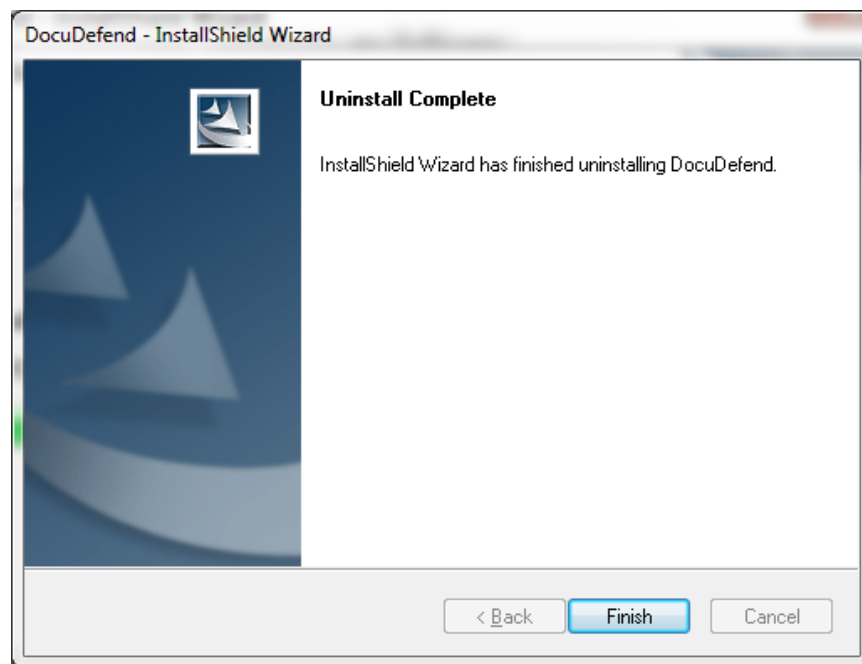


Figure - 6

3. When the progress bar reaches 100%, the following dialog box appears.



*Figure - 7*

Click **Finish** to complete.

You can also remove the software by selecting **Start** → **Control Panel** → **Add or Remove Programs** → **Founder DocuDefend** → **Change/Remove**, or executing the setup program once again.



## 2

---

---

# How to use Founder DocuDefend

As an innovative anti-copy security printing solution, Founder DocuDefend allows for a security background pattern to be added to documents while they are being printed. The subtle security background pattern is barely visible to the user but produces a visible message, text or image, when photocopied.

Founder DocuDefend employs a virtual printer named Founder Security Printer to enable you an easy and quick security printing experience, and parameter templates for you to pre-define various anti-copy effects. It also allows you to flexibly connect with various printer models, and print anti-copy security documents with commonly-used print paper and device, significantly reducing your cost.

Founder DocuDefend is only available for “administrators” users on your computer. Such a user can use Founder DocuDefend to print out anti-copy security documents by simply performing two steps: create a parameter template, and then use Founder Security Printer to apply the template to print.

## ***2.1 Online/Offline activation***

At the first time when you run Founder DocuDefend, it will remind you that it has not been registered, as shown in the following figure.

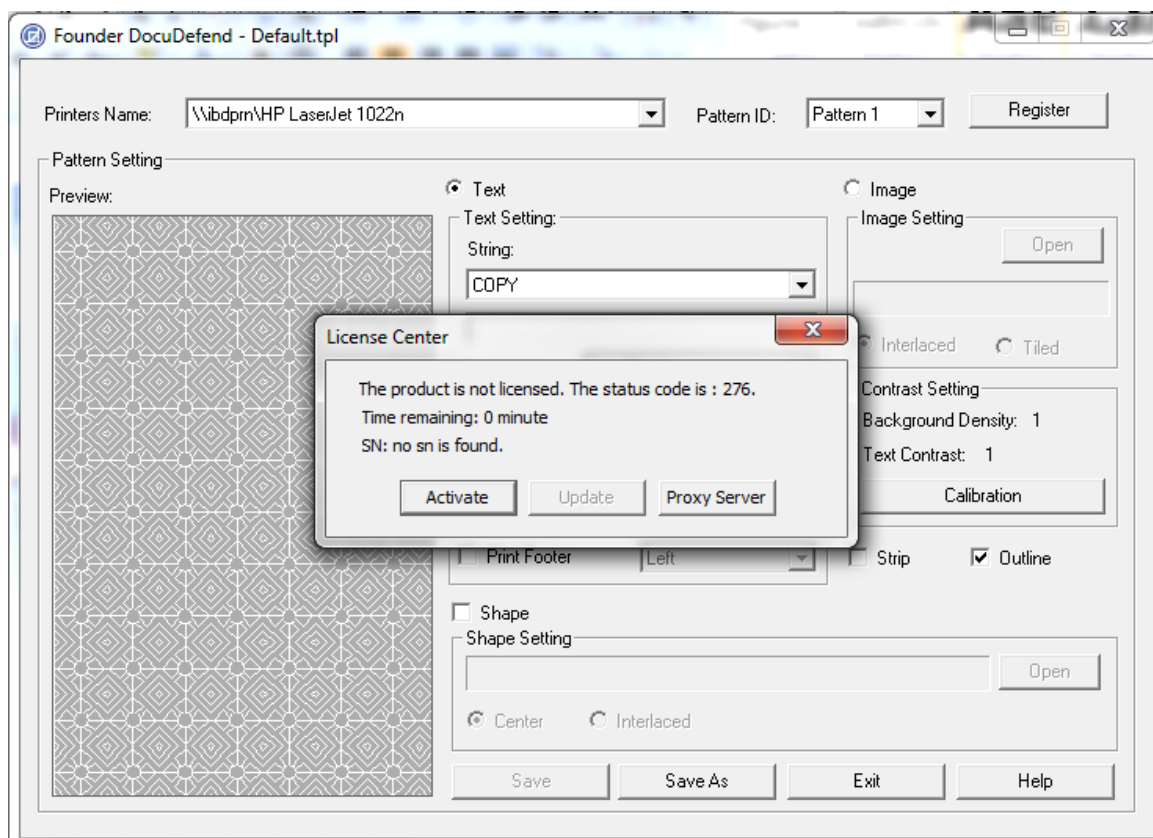


Figure - 8

If necessary, you need to set proxy server by clicking **Proxy Server**.

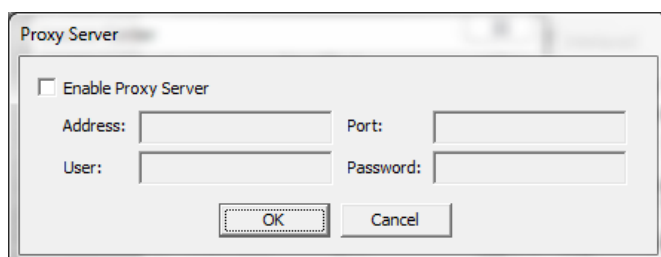


Figure - 9

Click **Activate** in Figure 8 to appear next figure.

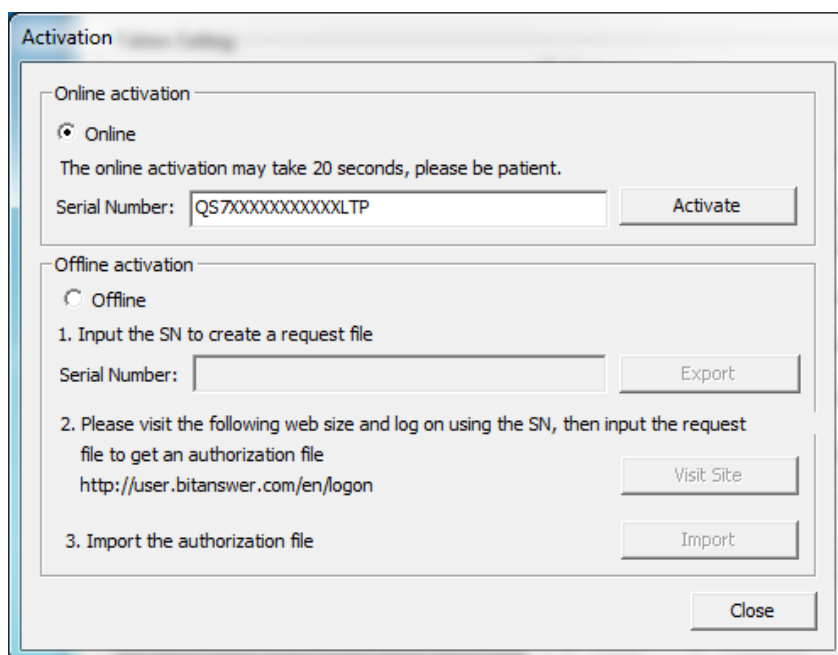


Figure - 10

If your computer can connect to the internet, then you can use online activation.

Check on **Online**, input the serial number, and then click **Activate** button. The serial number is an authorization code which is provided by manufacture.

If the serial number is valid, then the activation is successful.

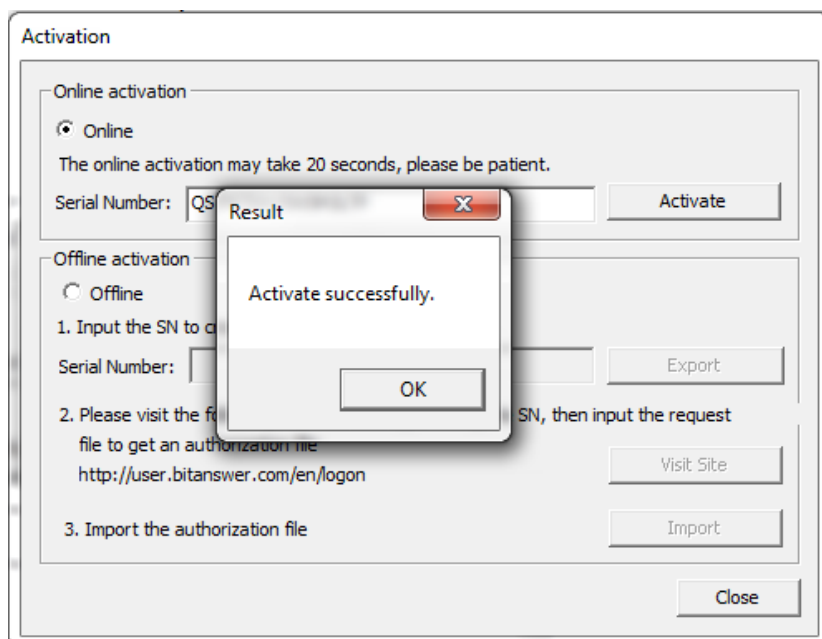


Figure - 11

If your computer cannot connect to internet, then you can use offline activation, refer to next figure.

**Activation**

**Online activation**

☐ Online

The online activation may take 20 seconds, please be patient.

Serial Number:

**Offline activation**

☒ Offline

1. Input the SN to create a request file

Serial Number:

2. Please visit the following web site and log on using the SN, then input the request file to get an authorization file

<http://user.bitanswer.com/en/logon>

3. Import the authorization file

Figure - 12

Check on **Offline**, input serial number, then click **Export** button to create a request file and save it as \*.req.

Visit the web site of <http://user.bitanswer.com/en/logon> from a computer which can connect to internet, next figure appears.

**User Login**

SN

Figure - 13

Login with the serial number, input the serial number, click **Login** button to popup next figure.

User Service Center

Bitanswer

QS7 LTP • Logout

Management

**Entitlement**

Service

Update

Product	Version	SN	Type	Activated On	Expired On	Status
DocuDefend	3.0	QS7	LTP Stand-alone	Apr 8	Apr 11	Active

Figure - 14

Select **Update** to popup next figure.



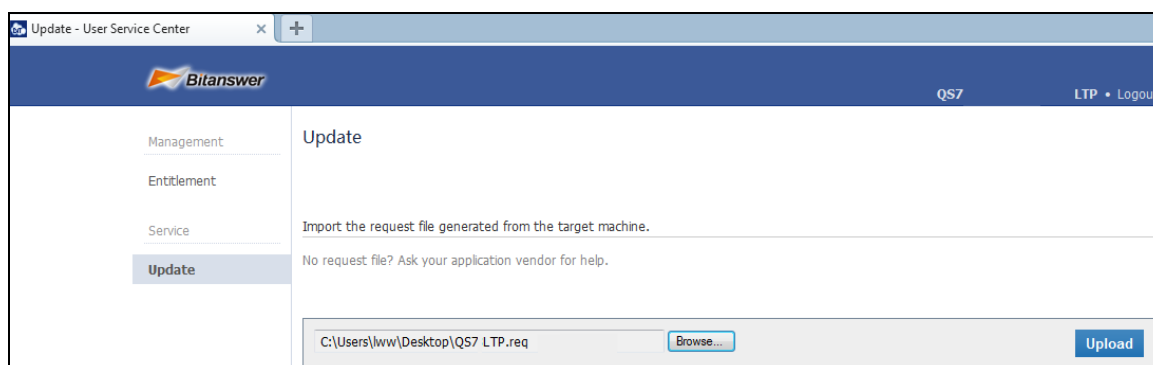


Figure - 15

Click **Browse** to choose the request file (\*.req) which has been created at previous step, and then click **Upload** button, next figure will popup.

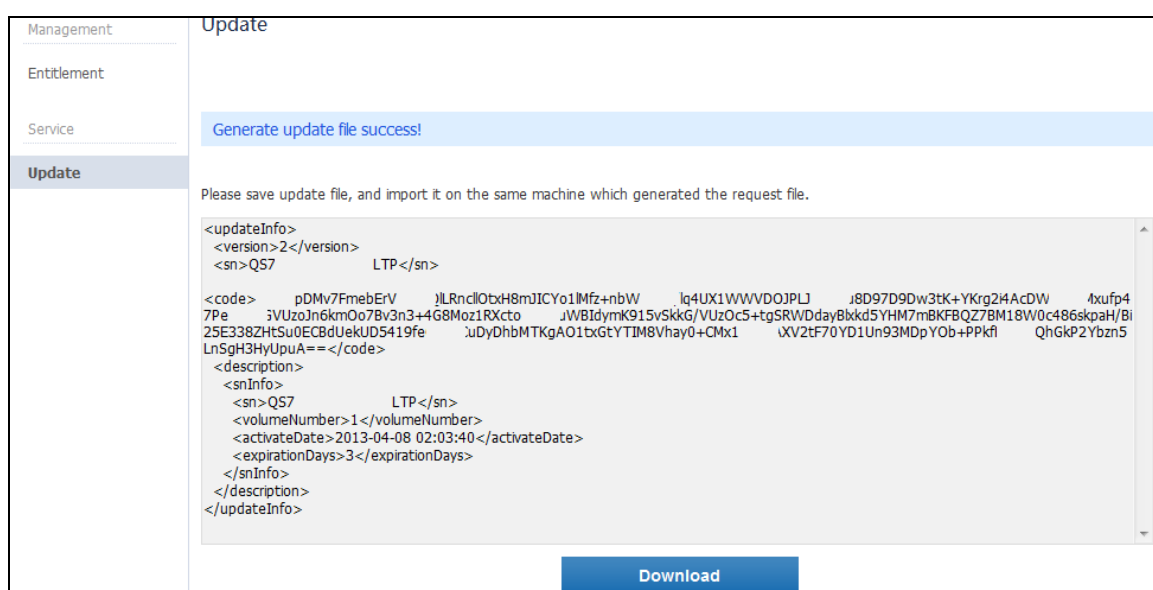


Figure - 16

The update file is generated successfully, click **Download** to save the update file as a \*.upd file.

Go to the computer which is running DocuDefend.

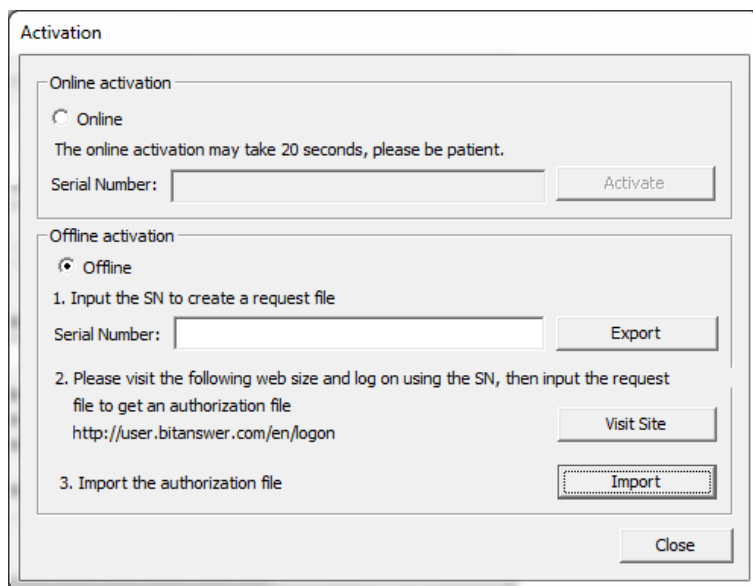


Figure - 17

In **Activation** window of DocuDefend, click **Import** to load the update file (\*.upd), the activation is successful.

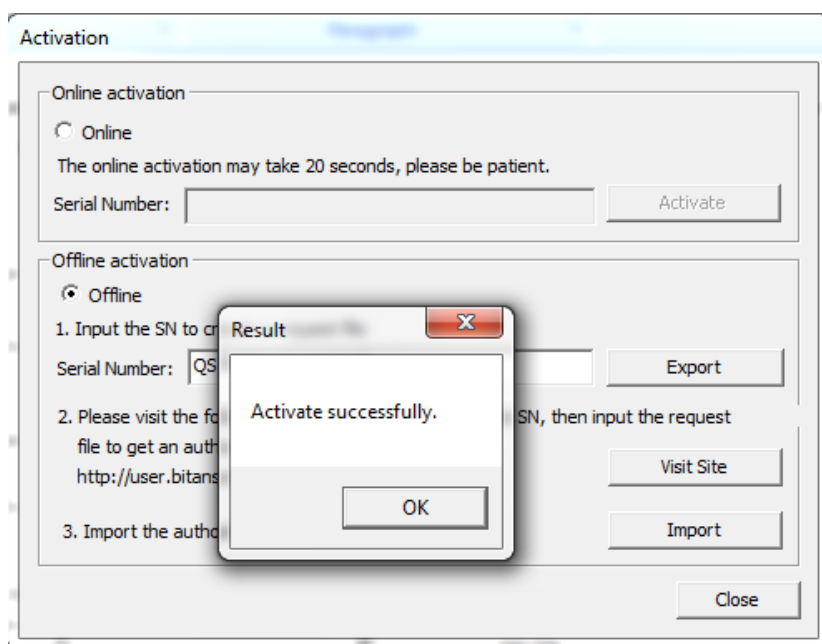


Figure - 18

#### Notes:

- i): When first run DocuDefend, if some anti-virus program asks you whether or not block DocuDefend, please choose not to block it.
- ii): If your authorization code is time limited, please do not change your computer's date to be abnormal.

## 2.2 Online/Offline update

If the authorization code (serial number) of DocuDefend is updated by the manufacture, for example the time limitation of authorization code is extended, and then you need to update the authorization code in DocuDefend.

Click **Register** button to popup next figure.

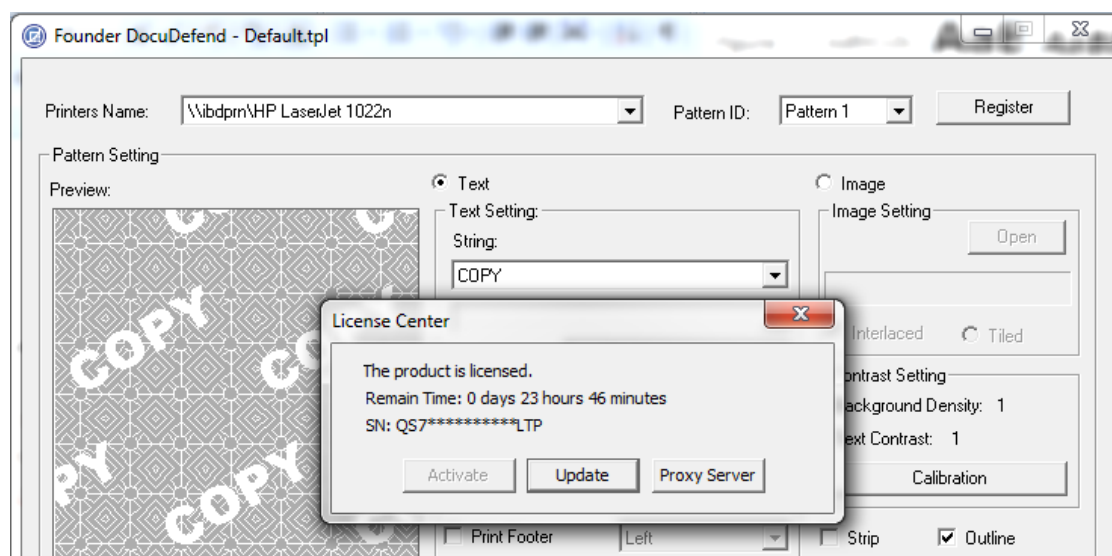


Figure - 19

Click **Update** button to popup next figure.

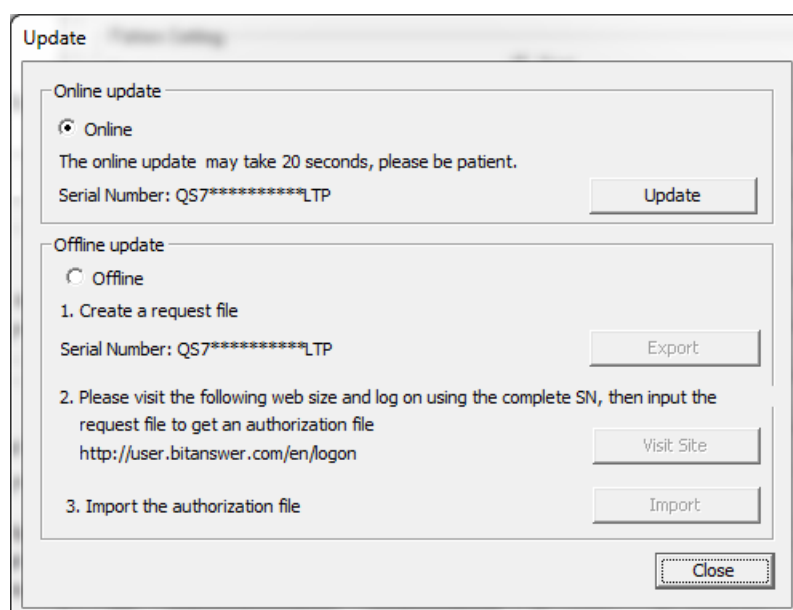


Figure - 20

If your computer can connect the internet, then check on **Online** and click **Update** button to finish the online update.

If your computer can not connect the internet, please select **Offline update**, the steps are the same as offline activation.

## 2.3 Create parameter template

Template is an integration of anti-copy security printing parameters, such as printer name, security background pattern, security message, background density, text contrast, footer, outline and etc. By using templates, you can avoid repeating parameter setting. When such template has been created, you can easily and quickly realize its anti-copy effect by applying it in the virtual printer - Founder Security Printer.

To create a parameter template, please open the parameter creation tool, as shown in the following figure, by selecting **Start** → **All Programs** → **Founder DocuDefend** → **DocuDefend**.

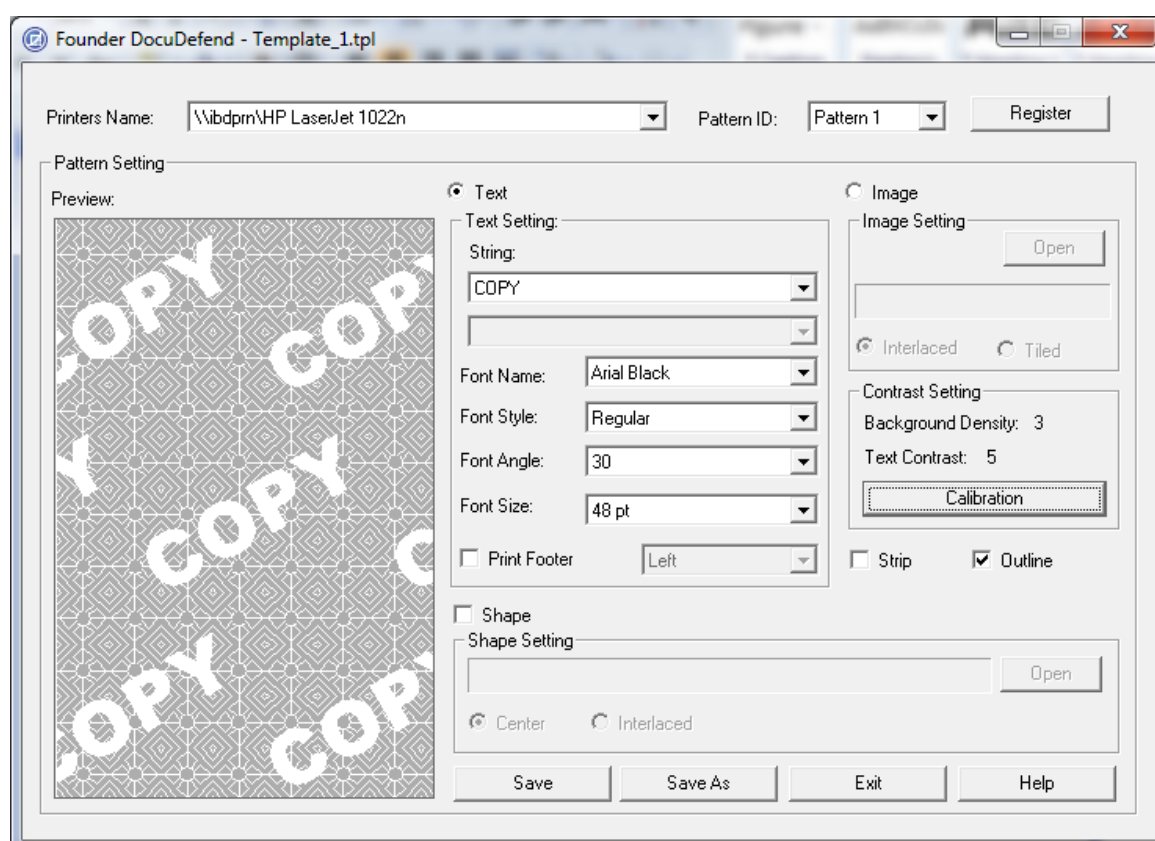


Figure - 21

Define related parameters, and click the **Save as** button to save your settings as a template, you will finish the creation. During the creation of a template, you may

perform the following configurations or operations:

## 1. Specify a printer

You need to choose a printer at first if you want to print an anti-copy file. When the communication between the printer drivers and Founder DocuDefend is established, the names of the available printers in your system will appear in the **Printers Name** dropdown list. By default, the default printer of your system is selected. Choose the one that you will actually use from the list.

Note that Founder DocuDefend supports only 600 dpi black and white printers, such as HP LaserJet 1200 Series PS. Therefore, in theory, don't specify any color printer. In case that you want to specify a color printer to print anti-copy security documents that also contain colorful elements, you may first output the anti-copy security background pattern to blank paper, then use the paper to print your documents. However, this may affect the efficiency and quality to some extent.

If you specify a virtual printer, such as Adobe PDF, you need to set the calibration parameter in DocuDefend according to the actual printer in order to get good result when you print the generated PDF file on the actual printer in future.

## 2. Select a background pattern

DocuDefend provides you with five system-defined security background pattern options. You can select anyone as needed from the **Pattern ID** dropdown list in the upper-right corner of the window. The **Preview** area on the lower-left part of the window will synchronously display the pattern you select.

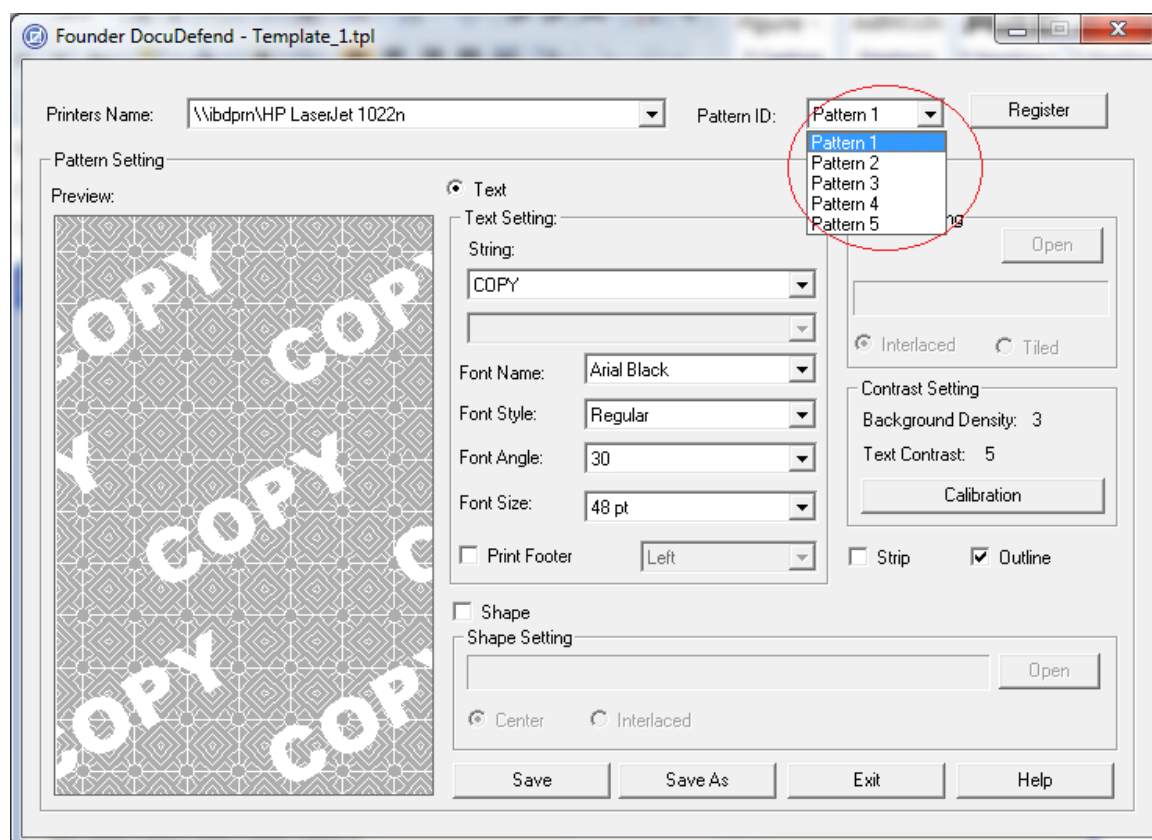


Figure - 22

#### Notes:

DocuDefend also supports you to use patterns generated by Founder SuperLine 4.60 or above. Founder SuperLine 4.60 or above can generate two types of patterns, tile pattern and full page pattern. If you select to use tile pattern whose size is comparably smaller, DocuDefend will duplicate the pattern to fill the whole background.

To use patterns generated by SuperLine, copy the generated pattern files respectively into the folders **Flower Lib** and **Pattern Lib** under the installation directory **\Program Files\Founder\Founder DocuDefend\Securityprint Libs**. In Founder SuperLine, when it comes to saving a pattern, the system will generate two .ptn files with different names, i.e. one is **X.ptn**, the other is **FlowerX.ptn** (X refers to an integer). Change the two **Xes** to a same integer larger than 5 sequentially (i.e. starting with 6 one by one), then copy the **X.ptn** into **Flower Lib** and the **FlowerX.ptn** into **Pattern Lib**, and then restart the parameter setting window, you will see an added option named **Pattern X** in the **Pattern ID** dropdown list.

### 3. Set security message

The security message could be a piece of security text or a security image.

#### 1) Security Text

If you want to use a piece of text as the security message, check the **Text** option. The corresponding **Text** settings, such as **String**, **Font Name**, **Font Style**, **Font Angel** and **Font Size** will be activated.

### ➤ Define the String

Founder DocuDefend provides you with some default text options in the **String** dropdown list, such as **COPY**, **Confidential**, and **Illegal**. You can directly choose these text options as needed, or you can select the **User defined** option to customize a string. When you select **User defined**, the edit box below the dropdown list will be activated, in which you can key into custom characters, such as **Copied**.

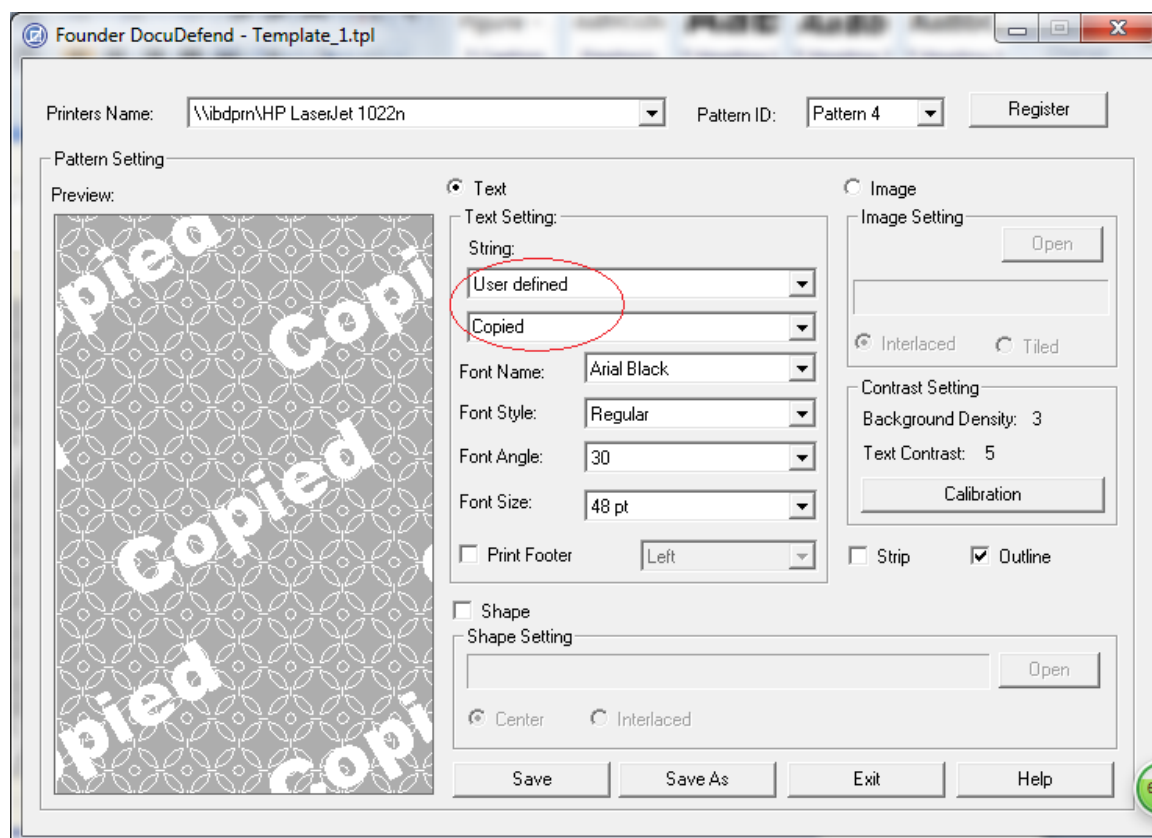


Figure - 23

### ➤ Set the Text Style

You can set the text style through the following parameters:

**Font Name:** The name of the font, the dropdown list on the right contains a wide range of font options for you to select.

**Font Style:** The style of the font. Available options include the most commonly used font styles: **Regular**, **Bold**, **Italic** and **Bold&Italic**.

**Font Angle:** The angle of text inclination, options, including 0, 30, 45, 60, 90, 120, 135, 150, 180, can meet your various demands.

**Font Size:** The size of the font. There are three options: 36, 48 and 72 pt.

**Print Footer:** When this option is checked, the string will be printed at the bottom of the printing file. The **Left**, **Center** and **Right** options in the right dropdown list determine the specific printing location of this string.

## 2) Security Image

If you want to use image as the security message, check the **Image** option. The corresponding **Image** settings will be enabled.

### ➤ Open the Image

In the **Image** setting area, click **Open** to load the **Open** dialog box.

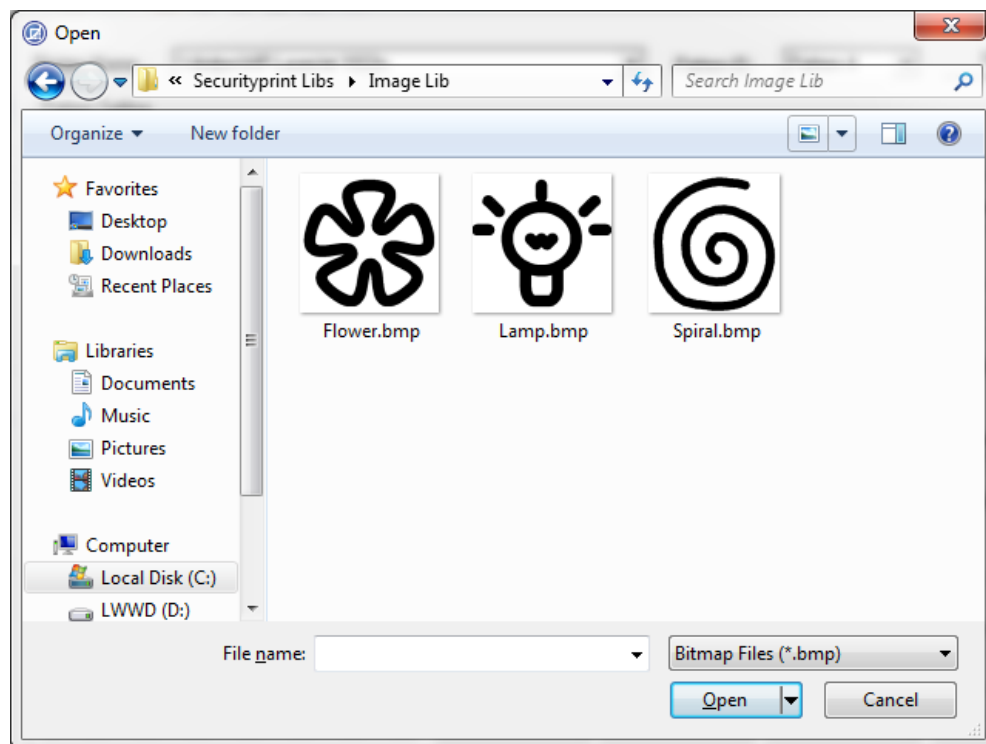


Figure - 24

By default, Founder DocuDefend provides you with several image options under the folder **Image Lib** of the installation directory **\Program Files\Founder\Founder DocuDefend\Securityprint Libs\**. Select the image you want to use and click **Open**. In the **Preview** area, as shown in the following figure, the image is displayed on top of the background pattern. And the edit box under the **Open** button displays the file path of the image.



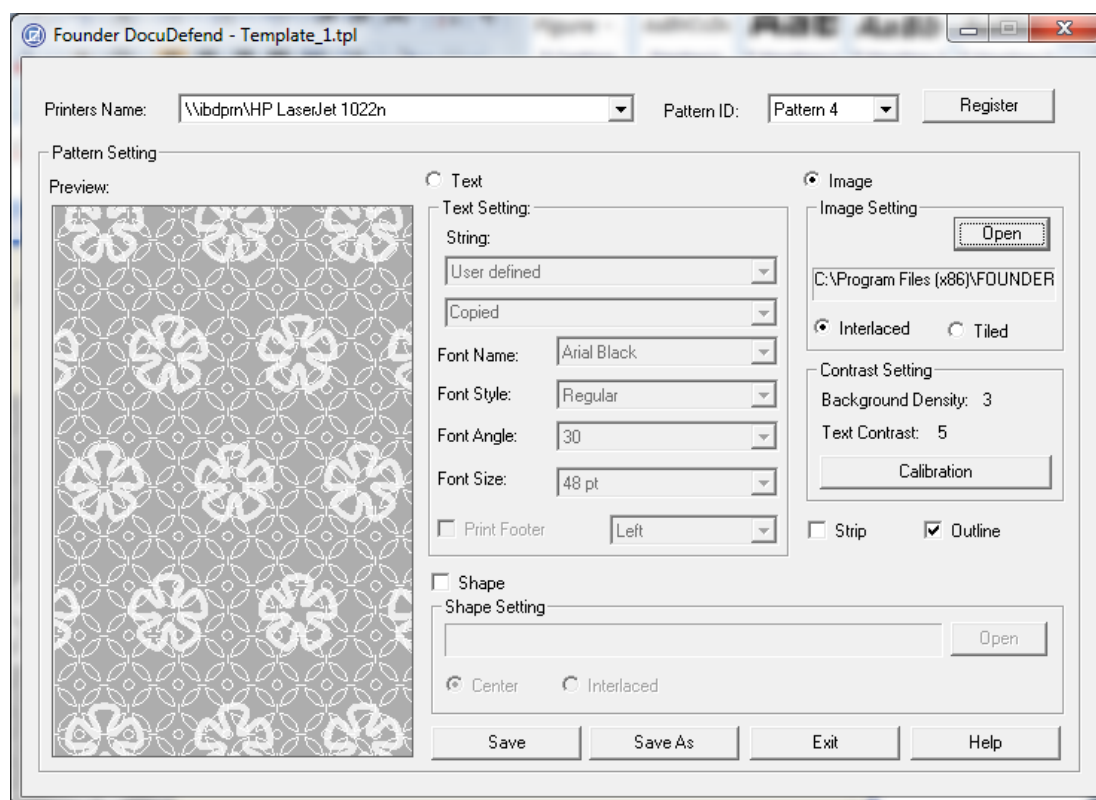


Figure - 25

### ➤ Arrange the Image

**Interlaced:** The images on the background pattern will interlace each other, as shown in the figure above.

**Tiled:** The images will be tiled.

#### Notes:

- i). The image size will equal to the original size when you select images with a resolution of 600 dpi. Otherwise, it will scale the size based on 600 dpi.
- ii). The image you select must be a 1 bit white and black BMP file. The black areas of the image you opened will constitute the image visible in the **Preview** area.
- iii). In order to gain the best effect, we recommend you to select images that are integral times as large as 32 pixels, for example, an image of 3200 pixels. If not, the application will cut the image you select, making sure that its remained is exactly integral times larger than 32pixels.

## 4. Configure contrast setting

When you have configured your printer, security background pattern and security message, you can proceed to configure the **Contrast Setting** parameters, defining a background density level and a text contrast level.

First, you should select a pattern. You can select any pattern because the difference in patterns has only a little affect on the contrast setting. And then click the **Calibration** button to open the **Calibration** dialog box, as shown in the following figure.

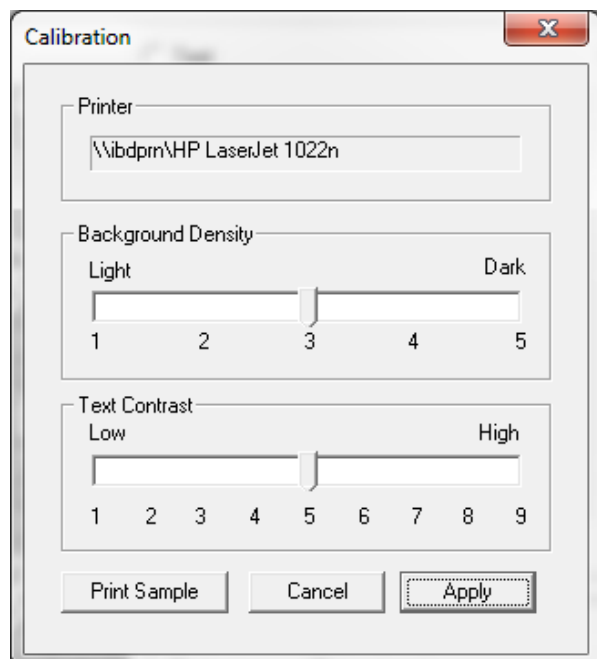


Figure - 26

The **Calibration** dialog box lists the printing contrast levels for the security Background and Text. There are 5 levels for Background Density, 9 levels for Text Contrast. Combine different levels of Background Density with those of Text Contrast, you will get 45 ways of combination, i.e. multiplication of 5 and 9. You should find out the combination that brings best result from these 45 ways. To do so, perform as follows:

### 1) Print 45 Block Samples

Click the **Print Sample** button, the printer will print 45 block samples resulted from the 45 ways of combination on 5 paper pages. Each page corresponds to the combinations of one Background Density level with 9 Text Contrast levels. See the following example:

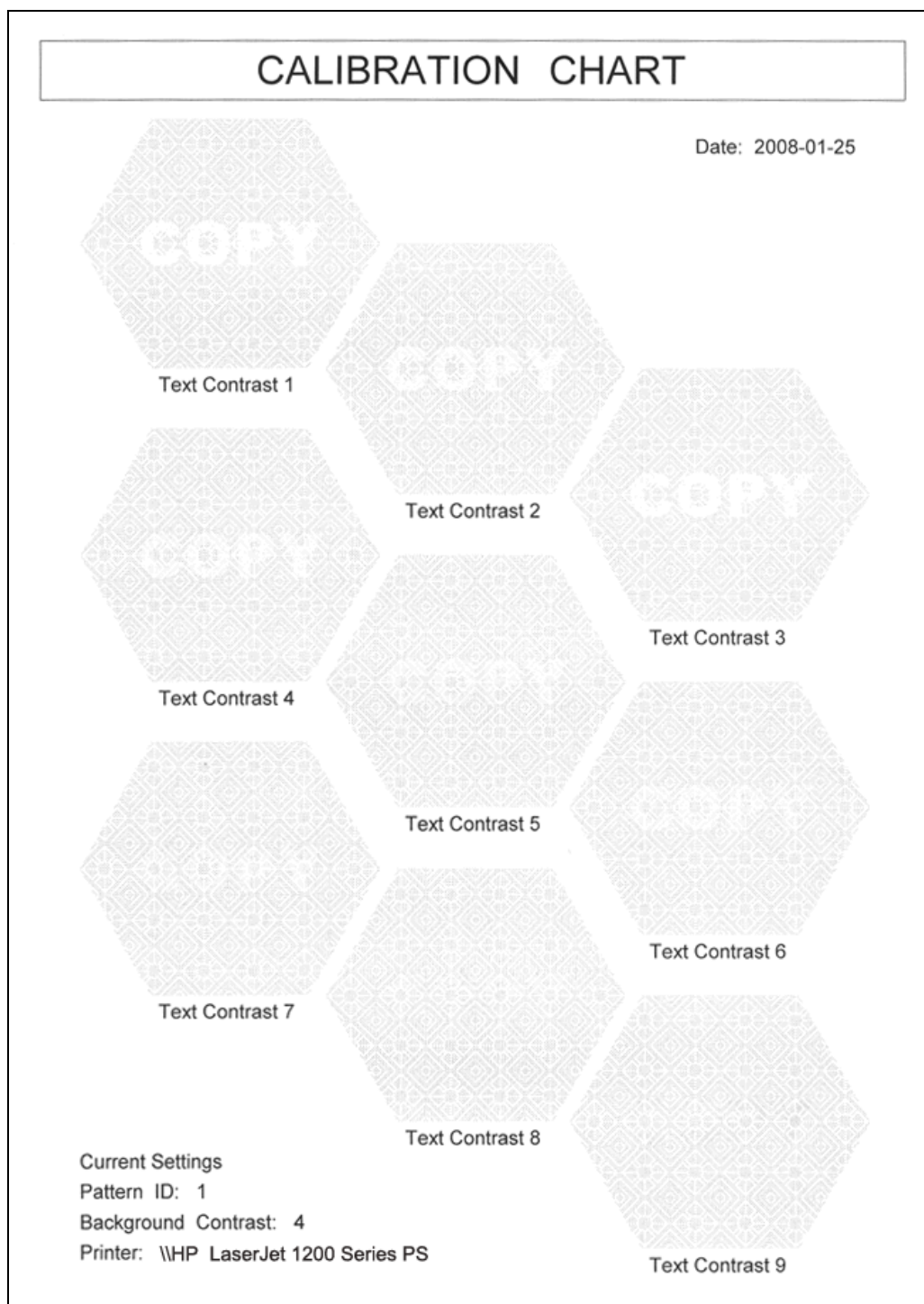


Figure - 27

As we can see from the side note at the lower-left corner of the figure, this printed page displays the block samples of all the **Text Contrast** levels when the **Background Density** level is set to 4. Other information displayed includes printer name, printing date and Pattern ID.

## 2) Select the Best Result

Compare the 45 block samples. The one whose security background patterns are most

clearly visible and whose security messages are shadiest is the one that can bring the best anti-copy effect. For example, in the figure as shown above, you can see that the Text Contrast 8 block can bring the best anti-copy effect.

**Note:**

*You can copy all the block samples and make your decision based on both the printed results and the copied results. This is very helpful in case that there are two blocks whose printed results are so extremely close that you can hardly distinct.*

### 3) Save the Best Result

For example, we have already seen in the example above, that for your current HP LaserJet 1200 Series PS printer, when the **Background Density** level is set to 4 and the **Text Contrast** level is set to 9, the printed block will bring the best anti-copy effect. Therefore, we can ensure that the best contrast setting for your current HP LaserJet 1200 Series PS printer should be Background Density 4 and Text Contrast 9.

Please return to the **Calibration** dialog box, set the **Background Density** level to 4, and **Text Contrast** to 9. See the following figure.

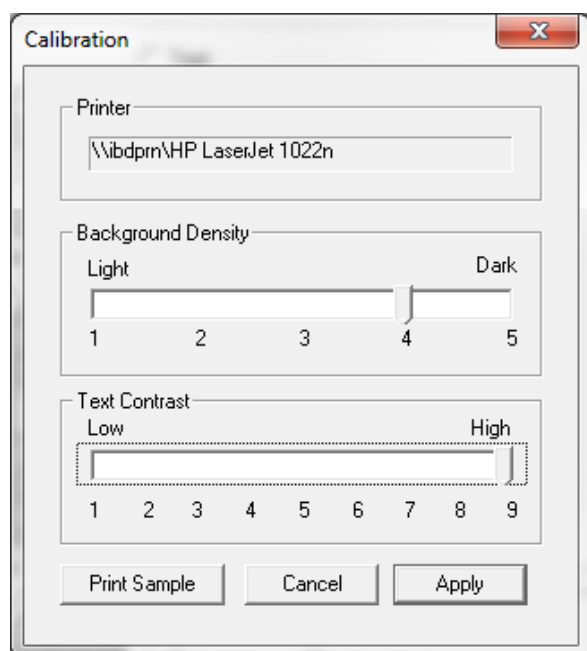


Figure - 28

Click **Apply** to apply this setting. This setting will be saved and displayed in the Founder DocuDefend parameter setting window.

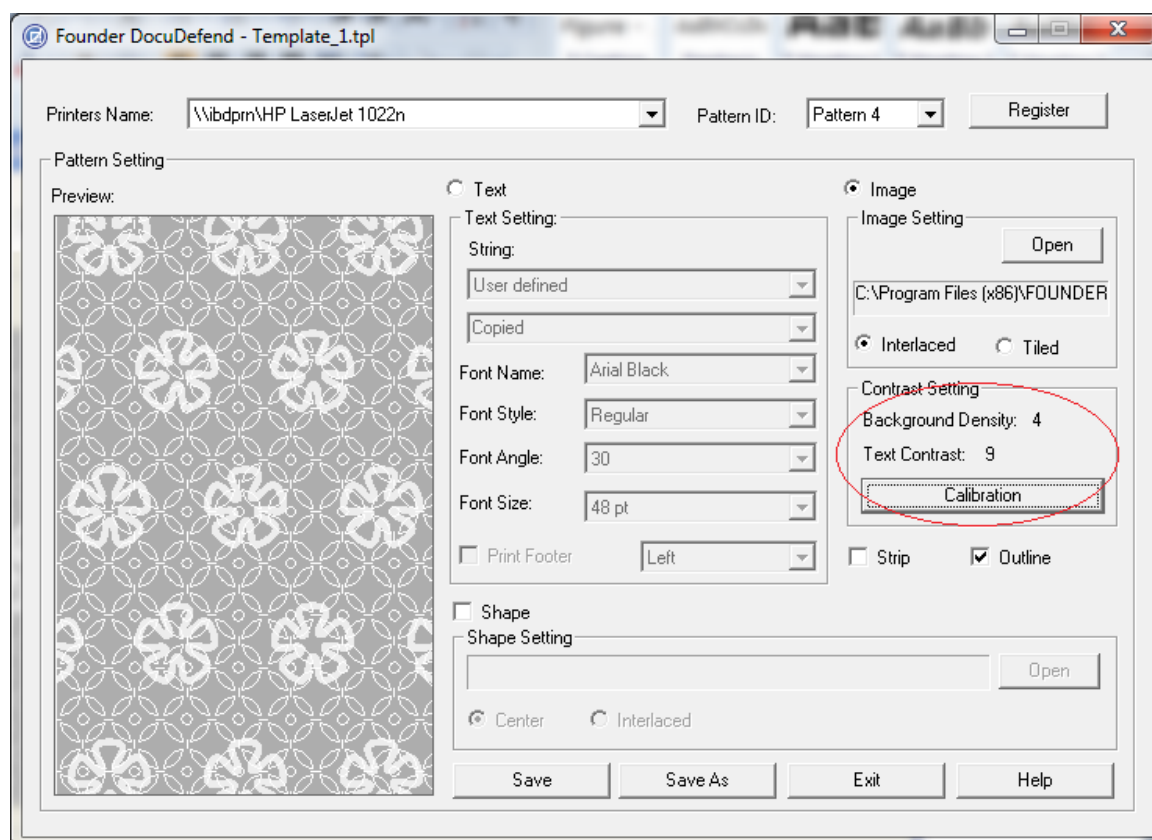


Figure - 29

**Note:**

The saved setting represents the best setting for the HP LaserJet 1200 Series PS printer under the current environment. In theory, every time when you start the HP LaserJet 1200 Series PS printer in the future, this setting can ensure that you get the best anti-copy result. But because the printing environment changes, such as the increase or decrease in ink amount, the aging of the printing head, this setting may lose its original effect in some time later, therefore, we recommend you to re-calibrate and re-define this setting as your printing environment changes.

## 5. Other settings

### 1) Strip

Sometimes, for example, when you want to save ink, you may only need to print part of the security background patterns and the security messages for reference. In this case, you can check the **Strip** option. The security background patterns and security messages then will not be printed across the page; instead, only one anti-copy strip will be printed at the bottom of the page.

**Note:**

When you use **Text** as the security message, the strip width will be affected by the font

*size you defined. The larger the font size is, the larger the strip width will be.*

## 2) Outline

When the **Outline** option is enabled, both the security pattern and message remain visible on the copy of your security document (the message appears in white). When it is disabled, only the security message remains visible. The following figure shows the difference. By default, this option is checked.

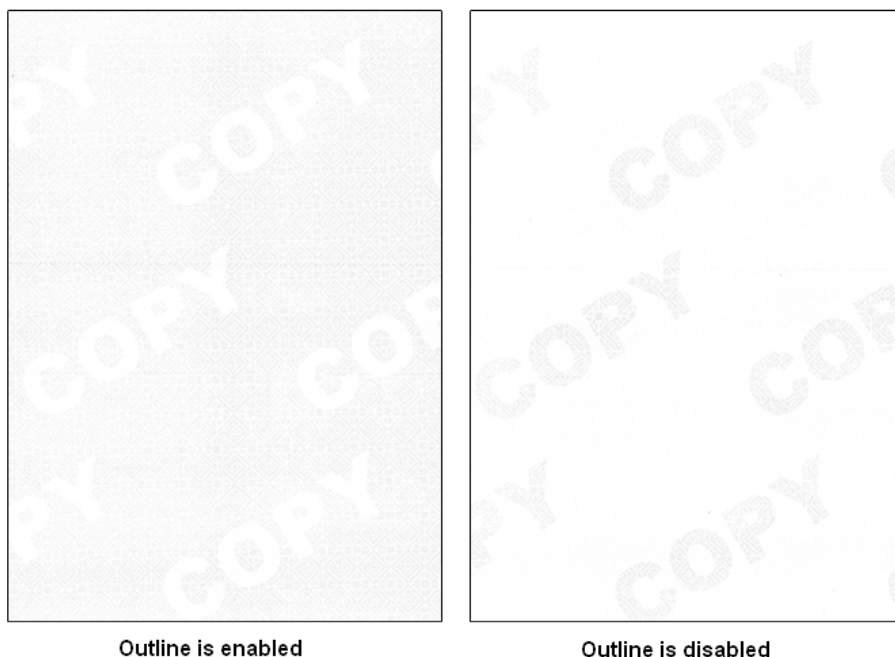


Figure - 30

## 3) Shape

When you click "Shape", then you can specify a bitmap image as the shape of background pattern. Then DocuDefend will not add a full page background pattern to the document, the pattern will be printed within the selected bitmap image.

Click "**Open**" to select a bitmap image, then you can use mouse to drag the text string in the preview window to specify the position of text string. If you double click the mouse in the preview window, then the text string will be automatically moved to the center of preview window.

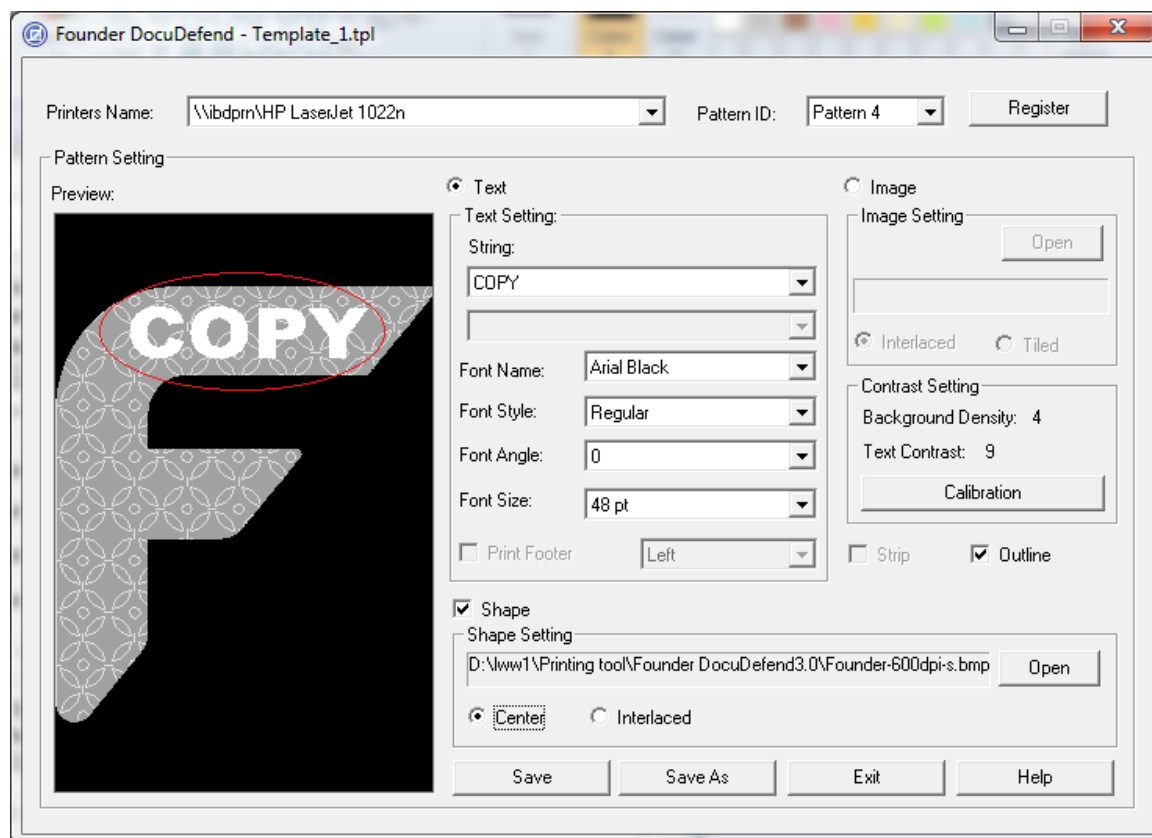


Figure - 31

The shape image has two kinds of arrangement: **Center** and **Interlaced**.

**Interlaced:** The shape image will interlace each other.

**Center:** Only one shape image in the center of the page.

#### Notes:

i). The shape image size will equal to the original size when you select images with a resolution of 600 dpi. Otherwise, it will scale the size based on 600 dpi.

## 6. Save as/save a template

Irrespective of whether you are creating a new template or editing an existing template, you can click the **Save as** button to save your current settings as a new template, and click the **Save** button to save your setting modifications to the current template.

## 2.4 Use Founder Security Printer

When Founder DocuDefend has been successfully installed into your computer, a virtual printer named as **Founder Security Printer** will automatically appear in the **Printers and Faxes** window of your operating system. The following figure shows an example:

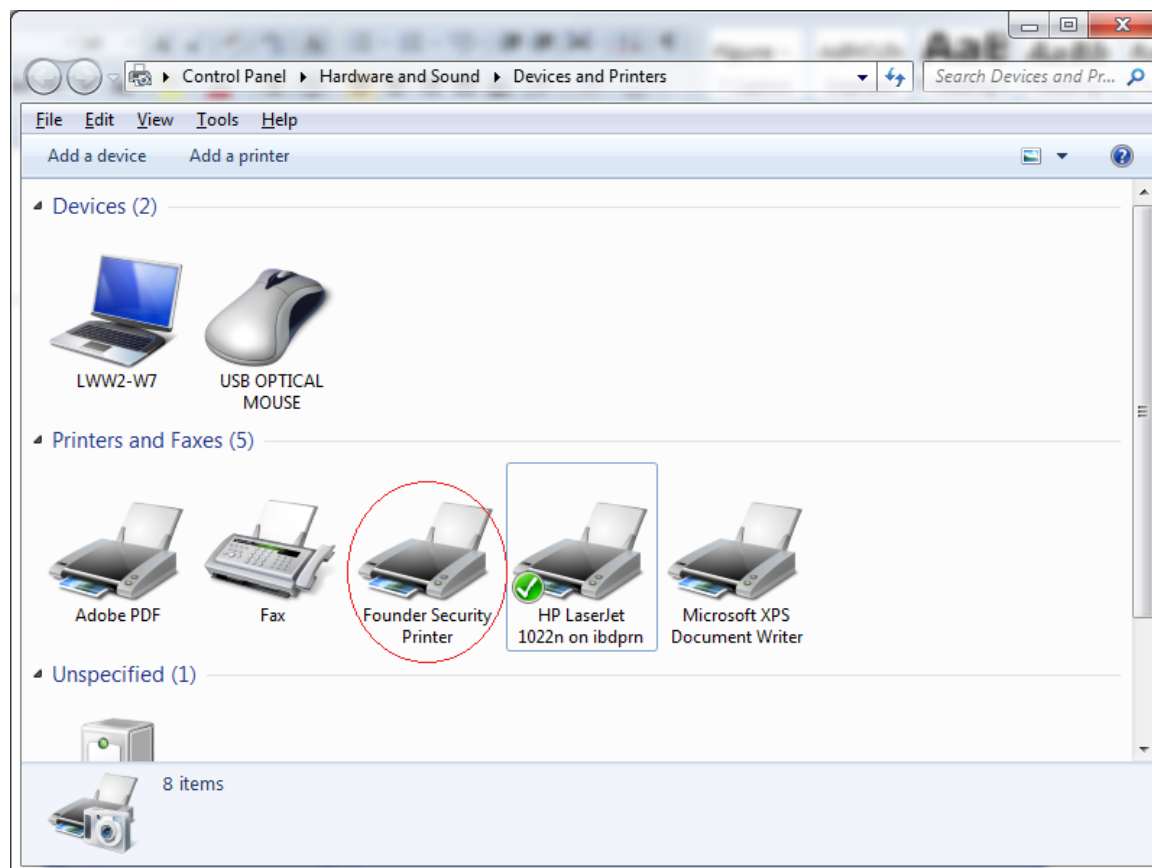


Figure - 32

This is a virtual printer that can not be shared over network. But like any other printers installed in your operating system, you can perform file print operation with this printer directly in document processing applications such as Microsoft Office (Word, Excel, etc.), Adobe Acrobat, OpenOffice.org and Corel WordPerfect.

Here we take a Word document as an example to introduce the operation steps:

1. Start Microsoft Word to open and/or edit your Word document.
2. Use menu command **File** → **Page Setup** to define settings such as page size, orientation, paper source and etc.
3. Select the menu **File** → **Print** to open the **Print** dialog box, and specify the **Printer** to **Founder Security Printer** from the **Name** dropdown list, as shown in the following figure.



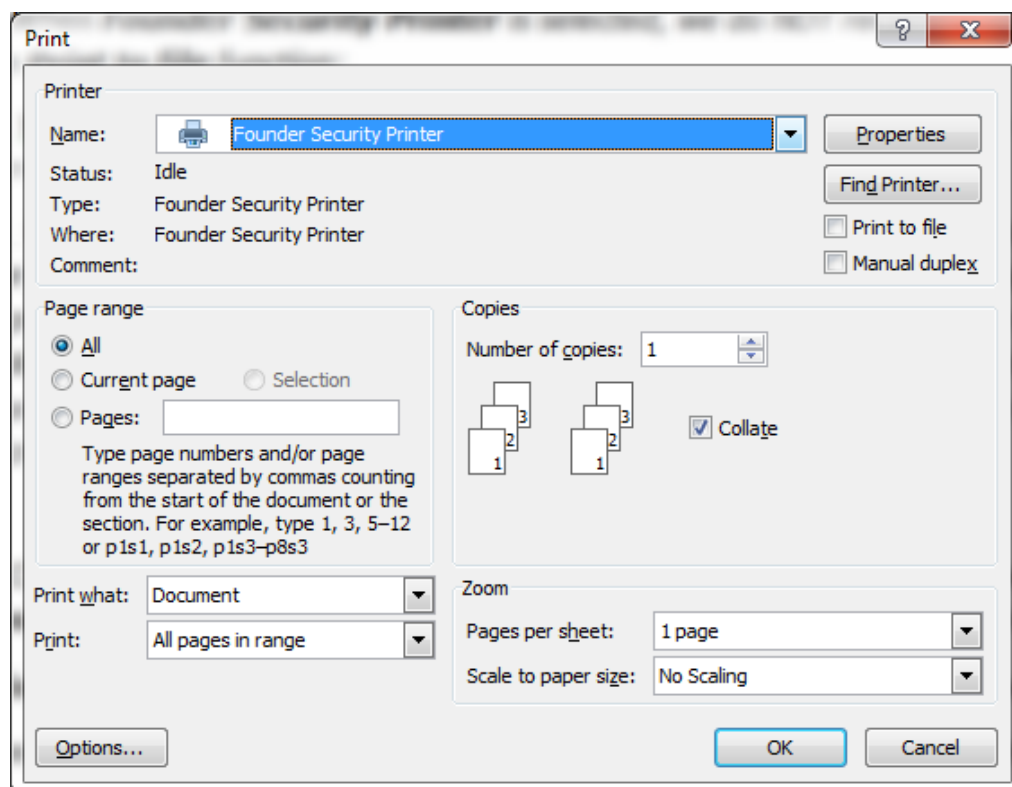


Figure - 33

4. Define some general print parameters, such as page range, number of copies, pages per sheet, and etc.

These parameters are basically the same as those for other printers, though they vary in different applications. But as you define these settings, please note that:

i). When **Founder Security Printer** is selected, we do NOT recommend you to enable the **Print to file** function;

5. Click the **Properties** button to open the **Printing Preferences** window (right click **Founder Security Printer** icon in the **Printers and Faxes** window, and select the **Printer** → **Printing Preferences** menu item, you can open this window as well), and check the **Print Template** tab, you will display a setting panel shown as in the following figure.

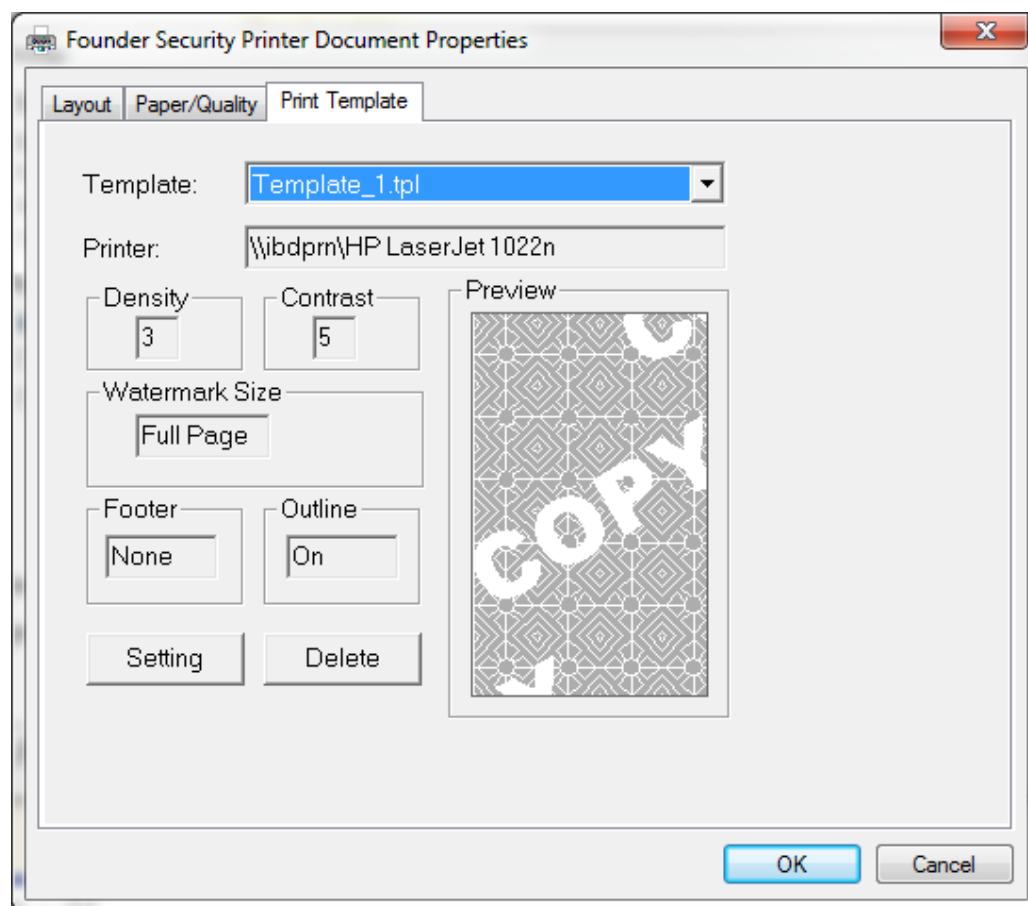


Figure - 34

6. Select a Founder DocuDefend parameter template from the **Template** dropdown list.

The **Template** dropdown list here provides all Founder DocuDefend parameter templates saved under the **Template Lib** folder of the installation directory **\Program Files\Founder\Founder DocuDefend\Securityprint Libs**. They can all be created with the template creation tool, as introduced previously. When you select a template, important settings including **Printer**, **Density**, **Contrast**, **Watermark Size**, **Footer** and **Outline**, will appear in corresponding boxes for your reference. And the **Preview** area will explicitly display the anti-copy effect of the selected template. By default, the template **Default.tpl** is selected.

In the above window, you can click the **Setting** button to open the parameter setting window, with which you can edit the parameter settings of the currently selected template, or create a new template. And you can click the **Delete** button to delete the selected template.

7. Click **OK** when you have selected an appropriate template.

8. Return to the **Print** window, click **OK** to print.